



## VIPA System 100V – Digital expansions modules EM123 with relay output

VIPA  
Gesellschaft für Visualisierung  
und Prozessautomatisierung mbH

Ohmstr. 4  
91074 Herzogenaurach  
Germany  
Tel.: +49-9132-744-0  
Fax: +49-9132-744-144  
www.vipa.de  
info@vipa.de

### Digital expansion modules EM123 with relay output

With the help of the expansion modules you have the possibility to enlarge the I/O areas of your CPU 11x. Expansion modules may exclusively be coupled with System 100V CPUs.

The coupling takes place at the I/O components of the CPU by means of the included 1tier bus coupler.



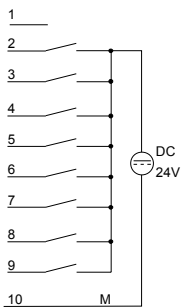
### Features / properties

The following properties distinguish the digital expansion modules:

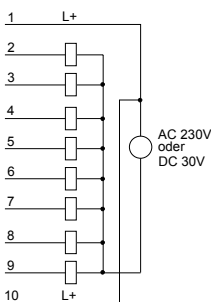
- Expansion of the I/O periphery of the CPU 11x
- Coupling of up to 4 modules to the back panel bus via bus coupler
- Combination of System 200V modules and System 100V expansion modules is possible
- Status monitoring per channel via LEDs

## Wiring diagram:

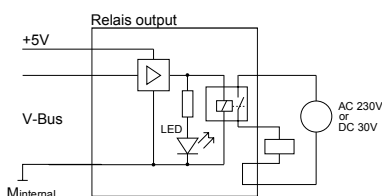
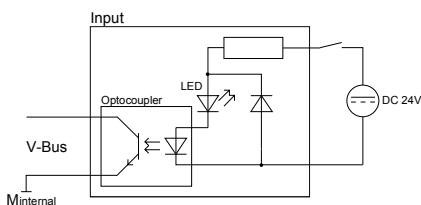
### Input section



### Relay output section



## Block diagram:



Technical Data	4EJ10	4EJ20
<b>Elektrical Data</b> <b>Input section</b> Number of inputs Input data Nominal input voltage Signal voltage "0" Signal voltage "1" Input filter time delay Frequency of input voltage Input resistor Input current Voltage supply Potential separation Status monitoring <b>Output section</b> Number of outputs Output data Nominal load voltage max. Output current Voltage supply Toggle rate Status monitoring	16 2Byte DC 24V (18...28,8V) 0 ... 5V 15 ... 28,8V 3ms  typ. 7mA internal 500V <sub>eff</sub> (field voltage - back panel bus) via LEDs at the frontside  8 über Relais 2Byte AC 230V or max. DC 30V AC 230V: 5A / DC 30V: 5A internal max. 100Hz via LEDs at the Frontseite	16 2Byte AC 60 ... 230V AC 0 ... 35V AC 60 ... 230V 25ms  50 ... 60Hz 136Ω  internal internal 8 über Relais 2Byte AC 230V or max. DC 30V AC 230V: 5A / DC 30V: 5A internal max. 100Hz via LEDs at the Frontseite
<b>Status monitoring</b> <b>Input section</b> LED (green) .0 ... .7 (per byte)  <b>Output section</b> LED (yellow) L+ LED (green) .0 ... .7 (per byte)  LED (red) F	E.0 to E.7 for the respective byte  With a signal-level "1" (from app. 15V) or active output the respective LED is turned on.  Supply voltage available A.0 to A.7 for the respective byte  When an output is active the respective LED is turned on. Overload, over-temperature or short circuit error	
<b>Connections</b>	10-pole plug Spring-cage terminals up to 2,5mm <sup>2</sup>	
<b>Dimensions and weight</b> Width x Height x Depth Weight	101,6x76x48 (mm) 250g	
<b>Ordering details</b> VIPA 123-4EJ10 VIPA 123-4EJ20	DI 16xDC 24V / DO 8xRelais DI 16xAC 60 ... 230V / DO 8xRelais	