



VIPA System 100V – Digital expansion modules EM123

VIPA
Gesellschaft für Visualisierung
und Prozessautomatisierung mbH

Ohmstr. 4
91074 Herzogenaurach
Germany
Tel.: +49-9132-744-0
Fax: +49-9132-744-144
www.vipa.de
info@vipa.de

Digital expansion modules EM123

With the help of the expansion modules you have the possibility to enlarge the I/O areas of your CPU 11x. Expansion modules may exclusively be coupled with System 100V CPUs.

The coupling takes place at the I/O components of the CPU by means of the included 1tier bus coupler.

Features / properties

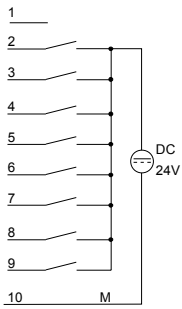
The following properties distinguish the digital expansion modules:



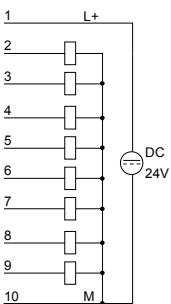
- Expansion of the I/O periphery of the CPU 11x
- Coupling of up to 4 modules to the back panel bus via bus coupler
- Combination of System 200V modules and System 100V expansion modules is possible
- Nominal input voltage DC 24V
- Nominal load voltage DC 24V (ext.) for outputs
- Output current per channel 1A
- Status monitoring per channel via LEDs

Wiring diagram:

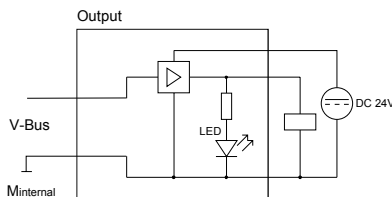
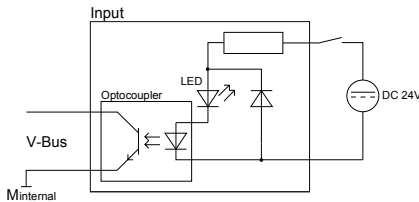
Input section



Output section



Block diagram:



Technical Data	4EH00	4EJ00	4EL00
Elektrical Data Input section Number of inputs Input data Nominal input voltage Signal voltage "0" Signal voltage "1" Input filter time delay Input current Voltage supply Potential separation Status monitoring Output section Number of outputs Output data Nominal load voltage Current consumption at L+ without load (all A.x=of) Output current per channel Status monitoring	8 2Byte DC 24V (18 ... 28,8V) 0 ... 5V 15 ... 28,8V 3ms typ. 7mA internal 500V _{eff} (field vottage - back panel bus) via LEDs at the frontside	16 2Byte DC 24V (18 ... 28,8V) 0 ... 5V 15 ... 28,8V 3ms typ. 7mA internal 500V _{eff} (field vottage - back panel bus) via LEDs at the frontside	16 2Byte DC 24V (18 ... 28,8V) 0 ... 5V 15 ... 28,8V 3ms typ. 7mA internal 500V _{eff} (field vottage - back panel bus) via LEDs at the frontside
Status monitoring Input section LED (green) .07 (per byte) Output section LED (yellow) L+ LED (green) .07 (per byte) LED (red) F	E.0 to E.7.for the respective byte With a signal-level "1" (from app. 15V) or active output the respective LED is turned on. Supply voltage available A.0 to A.7 for the respective byte When an output is active the respective LED is turned on. Overload, over-temperature or short circuit error		
Connections	10-pole plug Spring-cage terminals up to 2,5mm ²		
Dimensions and weight Width x Height x Depth Weight	101,6x76x48 (mm) 200g 210g 220g		
Ordering details VIPA 123-4EH00 VIPA 123-4EJ00 VIPA 123-4EL00	DI 8xDC 24V / DO 8xDC 24V 1A DI 16xDC 24V / DO 8xDC 24V 1A DI 16xDC 24V / DO 16xDC 24V 1A		